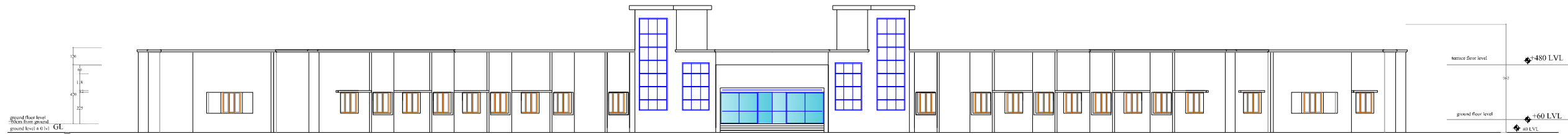


FRONT ELEVATION (FINAL)



FRONT ELEVATION (PHASE1)

DRAWING NO.
HLL/IDD/DC/TSR/2013-14/A-5

SIGNATURE

REVISION

PROJECT:-
PROPOSED GOVT. DENTAL COLLEGE, THRISSUR


DRAWING:-
ELEVATION

DRAWN BY:
RAHUL

CHECKED BY:
RVK

SCALE:
NTS

DATE:
28-02-2014



CONSULTANTS:

H L L LIFE CARE LTD.

(A Government of India Enterprise)

INFRASTRUCTURE DEVELOPMENT

DIVISION

VETTAMUKKU

THIRUVANANTHAPURAM-6

TEL: 0471-2368872, 2368873

FAX: 0471- 2368144

web : www.hllcarehll.com

DISCLAIMER : THESE DRAWINGS ARE THE SOLE PROPERTY OF HLL LIFE CARE LTD.

NO CHANGES OR COPIES CAN BE MADE WITHOUT CONSENT.